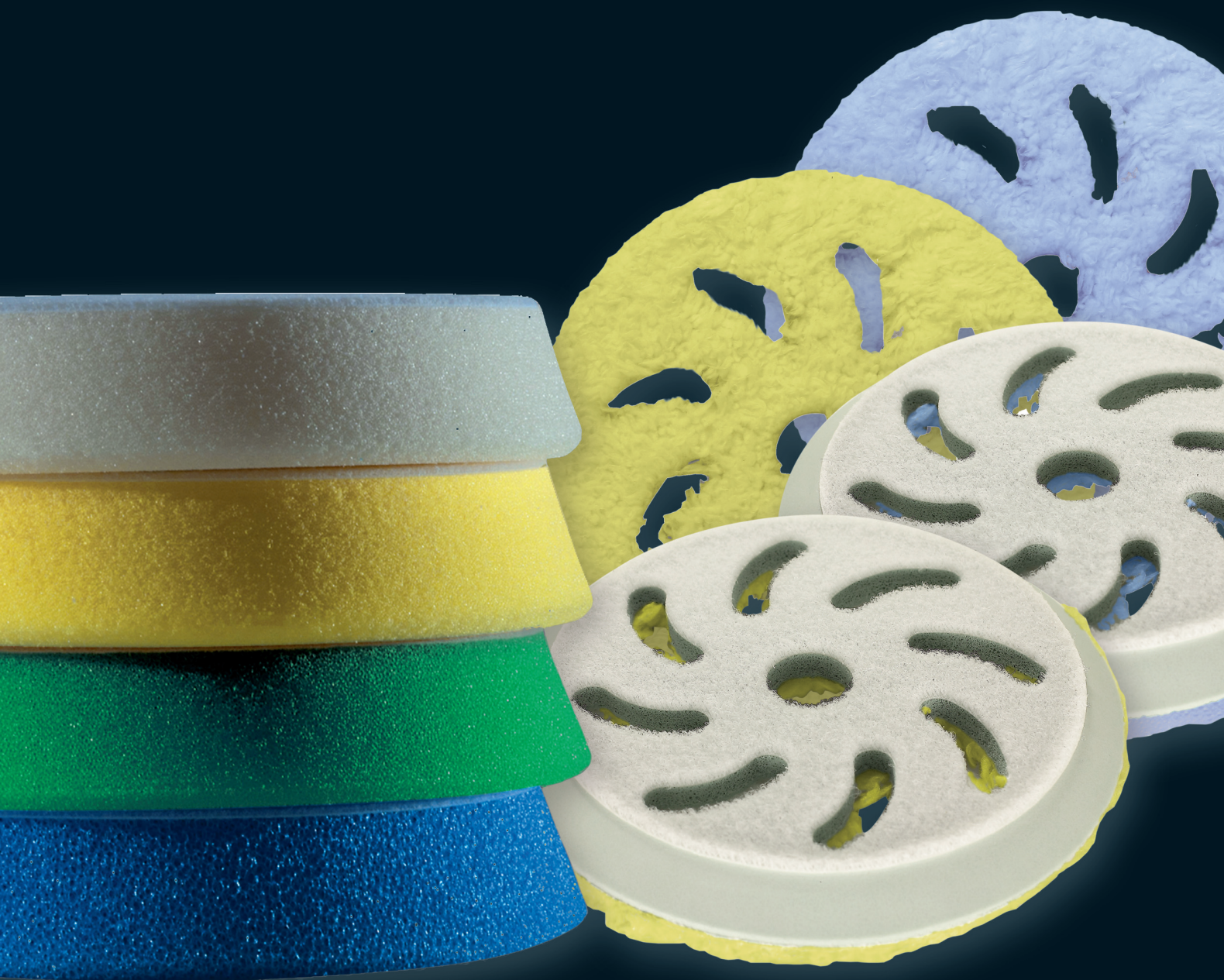


RUPES®

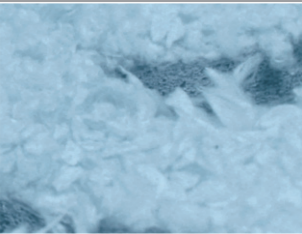



BigFoot®
RANDOM ORBITAL POLISHING SYSTEM

BIGFOOT
Polishing pads

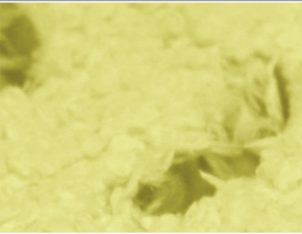


BIGFOOT MICROFIBER POLISHING PADS



BLUE CUTTING PAD

The Blue Microfiber Cutting Pads are designed for removing heavy swirl marks, scratches and oxidation from any color paintwork. The cutting version features a short and dense microfiber and is perfect for use with heavy cutting BigFoot polishing compound. The special microfiber allows for the true correction power of the product used and for maximum product coverage to achieve the highest quality results on ceramic laquer.



YELLOW FINISHING PAD

The Yellow Microfiber Finishing Pads are designed to restore the depth and clarity to your vehicle's paintwork . The long and soft microfiber is perfect for removing light swirl marks, holograms using fine and ultra fine BigFoot polishing compounds. The Yellow Microfiber Finishing Pads eliminate light imperfections delivering a perfect optical grade finish.

RECOMMENDED FOR

- Correction of deep scratches and oxide removal on hard surfaces and ceramic laquer.

Not suited for

- Freshly made paint;
- Polishing compounds not compatible with DA polishers;
- Solvent based polishing compounds.

RECOMMENDED FOR

- Gloss enhance on hard surfaces and ceramic laquer.

Not suited for

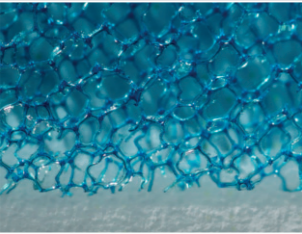
- Freshly made paint;
- Polishing compounds not compatible with DA polishers;
- Solvent based polishing compounds.

SPECIAL BACKING PAD FOR MICROFIBER POLISHING PAD

The BigFoot system offers the lowest vibration levels in the industry due to the precise balance relationship between the motor's counterbalance system and the accessory items used during the polishing process. As the microfiber polishing pads are heavier than the normal foam polishing pads, RUPES has designed a special backing plate for use with the microfiber pads. The new backing plate is lighter and has a repositioned center of gravity to assure perfect balance of BigFoot with the new microfiber pads. The ventilation characteristics of the new backing pad combined with the slots in the microfiber polishing pads effectively dissipate heat and maintain the work surface temperature at an acceptable level.

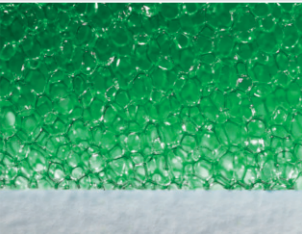


BIGFOOT FOAM POLISHING PADS



COARSE

The large dimension of the cells dissipates any heat build-up, allowing the compounds to work at optimum levels. The oscillating movement of the BigFoot systems is a perfect partner for the porous structure. The abrasive compound is not retained inside the sponge but is continuously applied to the work surface, providing a constant layer of lubricated abrasive between the surface and the foam polishing pad. The use of Zephir abrasive compound is recommended.



MEDIUM

The oscillating movement of the BigFoot systems is a perfect partner for the porous structure. The abrasive compound is not retained inside the sponge but is continuously applied to the work surface, providing a constant layer of lubricated abrasive between the surface and the foam polishing pad.

RECOMMENDED FOR

- Correction of deep scratches and oxide removal on soft-medium coat and freshly made paint.

Not suited for

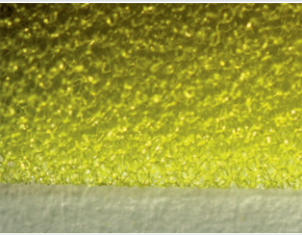
- Ceramic laquer;
- Polishing compounds not compatible with DA polishers;
- Solvent based polishing compounds.

RECOMMENDED FOR

- Quarz abrasive compound for optimum results on any type of surface
- Zephir abrasive compound to decrease correction time and still produce a good finish
- Keramik abrasive compound for one-step applications.

Not suited for

- Polishing compounds not compatible with DA polishers;
- Solvent based polishing compounds.



FINE

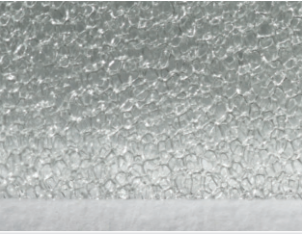
This most versatile of BigFoot pads adapts to the type of compound used. Its fine cell structure has a medium/hard consistency. Produced from superior grade resins, the fine pad heightens the "gloss level" of the compounds while offering excellent speed of correction.

RECOMMENDED FOR

- Quarz abrasive compound for an excellent finish in one-step applications
- Keramik abrasive compound for excellent results on difficult surfaces/this combination will easily remove light swirls and holograms
- Diamond abrasive compound to obtain extremely high levels of gloss on hard surfaces

Not suited for

- Solvent based polishing compounds.



ULTRAFINE

Manufactured from a high-density resin that results in a particularly soft consistency with a very fine cell structure, this foam pad adapts itself beautifully to convex surfaces and irregular shapes typically found on sports cars and vintage vehicles. Its unique soft density makes it ideal for attaining an ultragloss surface finish.

RECOMMENDED FOR

- The use of Diamond abrasive compound is recommended for a "show car" finish.

Not suited for

- Freshly made paint;
- Solvent based polishing compounds.

SPECIAL BACKING PAD FOR FOAM POLISHING PAD

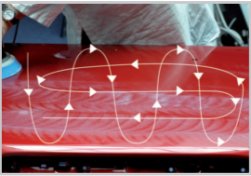
The RUPES backing pad is essential for the stability of the BigFoot System. Manufactured from expanded polyurethane, it is particularly resistant to mechanical stresses and together with the BigFoot polishing foam pad reduces vibration to a minimum. The special perforations in the pad are designed to create an air flow that helps to dissipate any heat generated by the polishing action. The material used for the manufacture of the velcro provides an effective anchor for the foam polishing pad.



FOR CORRECT USE



Evenly distribute the abrasive paste directly on the pad. The paste will thus be correctly absorbed, enabling the pad to work at its best capacity.



Carry out the polishing in an ordered and linear manner. The end result will thus be uniform over the entire polished surface.



If excessive pressure is used, the pads will not work properly and could deteriorate quickly. It is sufficient to rest and accompany the machine during the polishing work.

POLISHING PADS FOR RANDOM ORBITAL POLISHERS



1 Box
2 Foam pads

MICROFIBER PAD

Ø 80-100 mm $\begin{matrix} 80-3'' \\ \text{Ø mm-Ø in} \\ 100-4'' \end{matrix}$

Code	Description	Ø mm	Ø in	Unit
● 9.BF100XH/2	COARSE	80-100	3"-4"	1 carton with 2 pads
● 9.BF100XM/2	MEDIUM	80-100	3"-4"	1 carton with 2 pads
● 9.BF100XH/16	COARSE	80-100	3"-4"	1 carton with 16 pads
● 9.BF100XM/16	MEDIUM	80-100	3"-4"	1 carton with 16 pads



1 Box
4 Foam pads

FOAM PAD

Ø 80-100 mm $\begin{matrix} 80-3'' \\ \text{Ø mm-Ø in} \\ 100-4'' \end{matrix}$

Code	Description	Ø mm	Ø in	Unit
● 9.BF100H/4	COARSE	80-100	3"-4"	1 carton with 4 pads
● 9.BF100J/4	MEDIUM	80-100	3"-4"	1 carton with 4 pads
● 9.BF100M/4	FINE	80-100	3"-4"	1 carton with 4 pads
● 9.BF100S/4	ULTRAFINE	80-100	3"-4"	1 carton with 4 pads
● 9.BF100H/32	COARSE	80-100	3"-4"	1 carton with 32 pads
● 9.BF100J/32	MEDIUM	80-100	3"-4"	1 carton with 32 pads
● 9.BF100M/32	FINE	80-100	3"-4"	1 carton with 32 pads
● 9.BF100S/32	ULTRAFINE	80-100	3"-4"	1 carton with 32 pads
● 9.BF100H/50	COARSE	80-100	3"-4"	1 carton with 50 pads *
● 9.BF100J/50	MEDIUM	80-100	3"-4"	1 carton with 50 pads *
● 9.BF100M/50	FINE	80-100	3"-4"	1 carton with 50 pads *
● 9.BF100S/50	ULTRAFINE	80-100	3"-4"	1 carton with 50 pads *



1 Box
2 Foam pads

Ø 130-150 mm $\begin{matrix} 130-5'' \\ \text{Ø mm-Ø in} \\ 150-6'' \end{matrix}$

Code	Description	Ø mm	Ø in	Unit
● 9.BF150XH/2	COARSE	130-150	5"-6"	1 carton with 2 pads
● 9.BF150XM/2	MEDIUM	130-150	5"-6"	1 carton with 2 pads
● 9.BF150XH/16	COARSE	130-150	5"-6"	1 carton with 16 pads
● 9.BF150XM/16	MEDIUM	130-150	5"-6"	1 carton with 16 pads



1 Box
2 Foam pads

Ø 130-150 mm $\begin{matrix} 130-5'' \\ \text{Ø mm-Ø in} \\ 150-6'' \end{matrix}$

Code	Description	Ø mm	Ø in	Unit
● 9.BF150H/2	COARSE	130-150	5"-6"	1 carton with 2 pads
● 9.BF150J/2	MEDIUM	130-150	5"-6"	1 carton with 2 pads
● 9.BF150M/2	FINE	130-150	5"-6"	1 carton with 2 pads
● 9.BF150S/2	ULTRAFINE	130-150	5"-6"	1 carton with 2 pads
● 9.BF150H/16	COARSE	130-150	5"-6"	1 carton with 16 pads
● 9.BF150J/16	MEDIUM	130-150	5"-6"	1 carton with 16 pads
● 9.BF150M/16	FINE	130-150	5"-6"	1 carton with 16 pads
● 9.BF150S/16	ULTRAFINE	130-150	5"-6"	1 carton with 16 pads
● 9.BF150H/50	COARSE	130-150	5"-6"	1 carton with 50 pads *
● 9.BF150J/50	MEDIUM	130-150	5"-6"	1 carton with 50 pads *
● 9.BF150M/50	FINE	130-150	5"-6"	1 carton with 50 pads *
● 9.BF150S/50	ULTRAFINE	130-150	5"-6"	1 carton with 50 pads *



1 Box
2 Foam pads

Ø 150-180 mm $\begin{matrix} 150-6'' \\ \text{Ø mm-Ø in} \\ 180-7'' \end{matrix}$

Code	Description	Ø mm	Ø in	Unit
● 9.BF180XH/2	COARSE	150-180	6"-7"	1 carton with 2 pads
● 9.BF180XM/2	MEDIUM	150-180	6"-7"	1 carton with 2 pads
● 9.BF180XH/16	COARSE	150-180	6"-7"	1 carton with 16 pads
● 9.BF180XM/16	MEDIUM	150-180	6"-7"	1 carton with 16 pads



1 Box
2 Foam pads

Ø 150-180 mm $\begin{matrix} 150-6'' \\ \text{Ø mm-Ø in} \\ 180-7'' \end{matrix}$

Code	Description	Ø mm	Ø in	Unit
● 9.BF180H/2	COARSE	150-180	6"-7"	1 carton with 2 pads
● 9.BF180J/2	MEDIUM	150-180	6"-7"	1 carton with 2 pads
● 9.BF180M/2	FINE	150-180	6"-7"	1 carton with 2 pads
● 9.BF180S/2	ULTRAFINE	150-180	6"-7"	1 carton with 2 pads
● 9.BF180H/16	COARSE	150-180	6"-7"	1 carton with 16 pads
● 9.BF180J/16	MEDIUM	150-180	6"-7"	1 carton with 16 pads
● 9.BF180M/16	FINE	150-180	6"-7"	1 carton with 16 pads
● 9.BF180S/16	ULTRAFINE	150-180	6"-7"	1 carton with 16 pads
● 9.BF180H/50	COARSE	150-180	6"-7"	1 carton with 50 pads *
● 9.BF180J/50	MEDIUM	150-180	6"-7"	1 carton with 50 pads *
● 9.BF180M/50	FINE	150-180	6"-7"	1 carton with 50 pads *
● 9.BF180S/50	ULTRAFINE	150-180	6"-7"	1 carton with 50 pads *

*The foam pads packed in one bulk



RUPES SPA
Via Marconi, 3A - 20080 Vermezzo (MI) - Italy
Tel.: +39 02.946941 - Fax: +39 02.94941040
E-mail: info_rupes@rupes.it - Web: www.rupes.com



Follow us

www.bigfootrupes.com

I.P.

Cod. 9 ZB43/12/GB

If excessive pressure is used, the pads will not work properly and could deteriorate quickly. It is sufficient to rest and accompany the machine during the polishing work.